

# Male x Female Threaded End Connection

## Series W Stainless Steel

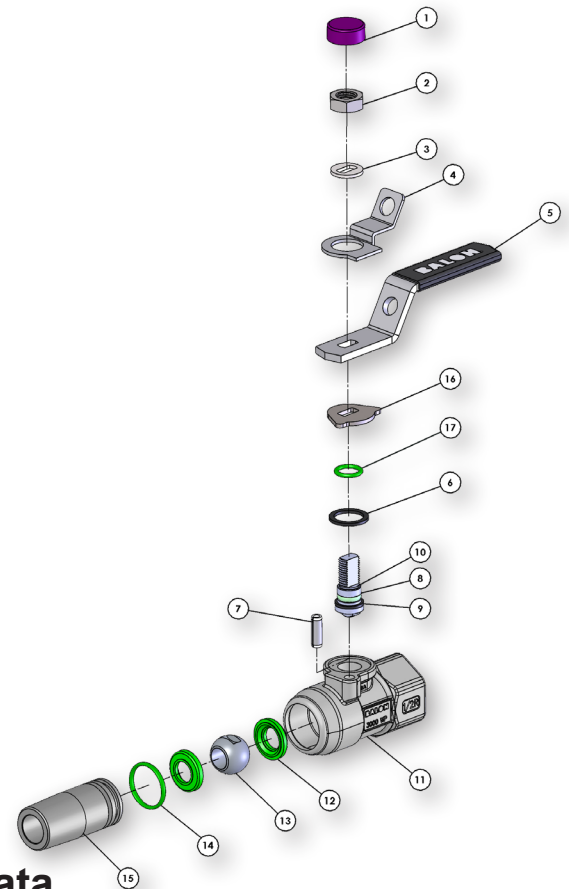
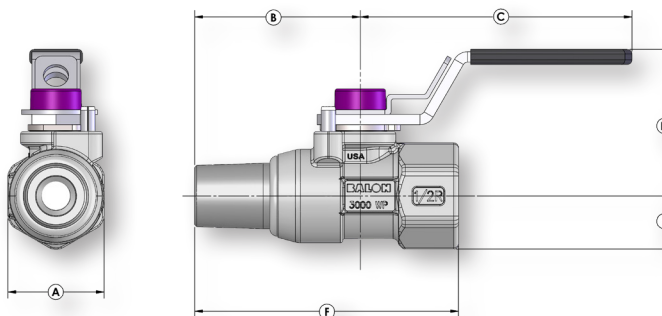


- 100% Made in USA
- 2000 to 3000 PSI WP
- ½" Through 1"
- Welded Body Construction
- NACE Standard
- Certified Low Emission Per API 641
- Fire Safe Design
- Welded Top Works Keeps Travel Stops Intact When Handle is Removed
- All Metal Components Made from Stainless Steel
- Locking Device Standard
- Multi-Seal Seats (See page B-5)
- Low-Temp Service to -50°F

### Material Description

ITEM	PART NAME	MATERIAL (STANDARD)
1	Weather Guard	Polypropylene
2	Stem Nut	Stainless Steel
3	Spacer	Stainless Steel
4	Lock Plate	Stainless Steel
5	Handle*	Stainless Steel
6	Stem Washer	TFE
7	Stop Pin	Stainless Steel
8	Stem O-Ring	Fluorocarbon
9	Stem Seal	TFE
10	Stem	316 Stainless Steel
11	Body	ASTM A351 CF8M
12	Ball Seat	Nylon/Polyketone
13	Ball	316 Stainless Steel
14	Body O-Ring	Fluorocarbon
15	Adapter	316 Stainless Steel
16	Stop Plate	Stainless Steel
17	O-Ring	Fluorocarbon

\* Handle and locking device standard on all Series W Ball Valves.



### Dimensional Data

SIZE	CATALOG NUMBER	PORT	WP	A	B	C	D	E	F	LBS.	Cv
.50x.375x.50	1/2R-W95N-MF	.375	2000	1.07	2.15	3.50	1.90	.58	3.43	0.75	6
.50x.375x.50	1/2R-W05N-MF	.375	3000	1.25	2.15	3.50	1.90	.69	3.43	0.89	6
.75x.75x.75	3/4F-W95N-MF	.75	2000	2.19	1.59	4.87	2.41	1.09	3.40	2.20	-
.75x.75x.75	3/4F-W05N-MF	.75	3000	2.19	1.59	4.87	2.41	1.09	3.40	2.35	-
1x.75x1	1R-W95N-MF	.75	2000	2.09	1.70	4.87	2.41	1.04	3.64	2.10	30
1x.75x1	1R-W05N-MF	.75	3000	2.19	1.70	4.87	2.41	1.09	3.64	2.26	30