

Male x Female Threaded End Connection



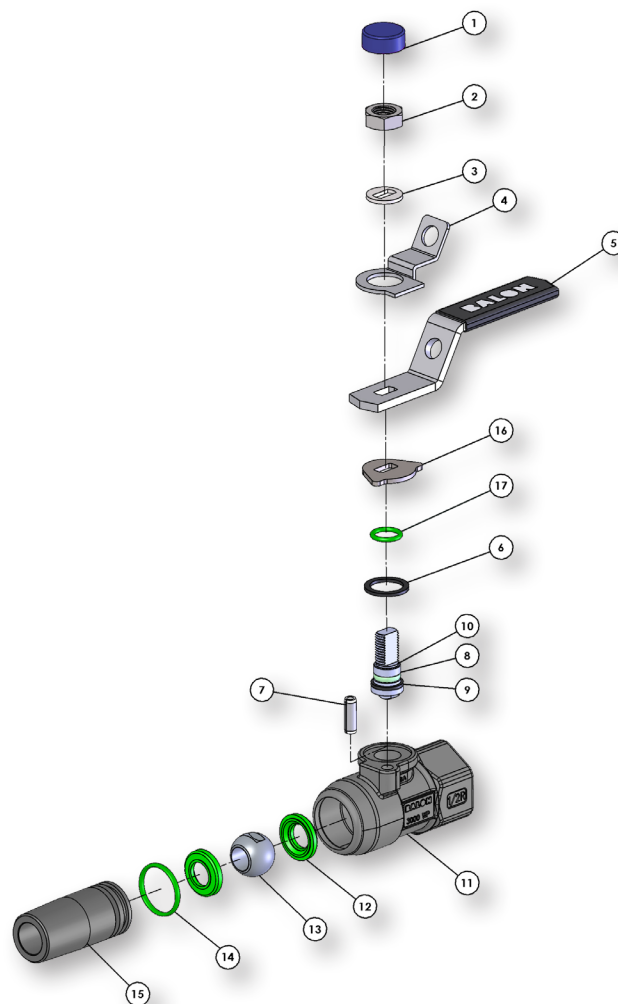
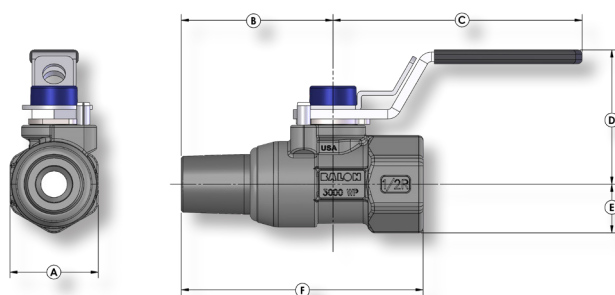
Series W Carbon Steel

- 100% Made in USA
- 2000 to 3000 PSI WP
- 1/2" and 1" Reduced Port
- Welded Body Construction
 - Certified Low Emission Per API 641
 - Fire Safe Design
 - Welded Top Works Keeps Travel Stops Intact When Handle is Removed
- 316 Stainless Steel Ball and Stem Standard
- Locking Device Standard
- Multi-Seal Seats (See page B-5)

Material Description

ITEM	PART NAME	MATERIAL (STANDARD)
1	Weather Guard	Polypropylene
2	Stem Nut	Carbon Steel
3	Spacer	CarbonSteel
4	Lock Plate	Carbon Steel
5	Handle*	Carbon Steel
6	Stem Washer	TFE
7	Stop Pin	Carbon Steel
8	Stem O-Ring	Fluorocarbon
9	Stem Seal	TFE
10	Stem	316 Stainless Steel
11	Body	ASTM A216 WCB
12	Ball Seat	Nylon/Polyketone
13	Ball	316 Stainless Steel
14	Body O-Ring	Fluorocarbon
15	Adapter	ASTM A108 1018
16	Stop Plate	Stainless Steel
17	O-Ring	Fluorocarbon

* Handle and locking device standard on all Series W Ball Valves.



Dimensional Data

SIZE	CATALOG NUMBER	PORT	WP	A	B	C	D	E	F	LBS.	Cv
.50x.375x.50	1/2R-W93-MF	.375	2000	1.07	2.15	3.50	1.90	.58	3.43	0.75	6
.50x.375x.50	1/2R-W03-MF	.375	3000	1.25	2.15	3.50	1.90	.69	3.43	0.89	6
1x.75x1	1R-W93-MF	.75	2000	2.09	1.70	4.87	2.41	1.04	3.64	2.10	30
1x.75x1	1R-W03-MF	.75	3000	2.19	1.70	4.87	2.41	1.09	3.64	2.26	30